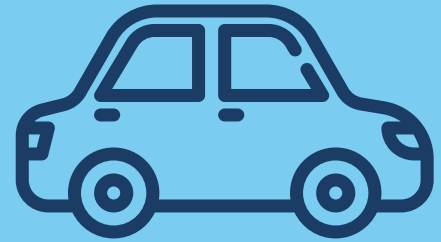


# USEFUL INFORMATION

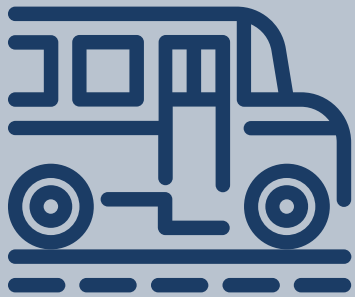
## PARENT TRANSPORTATION

Morning Drop-Off begins at 8:45 am. Please drop off your child no later than 9:10 am. Follow staff instructions upon arrival.

Afternoon Pick-Up begins when all camp buses have exited, typically at 3:35 pm. Please pick up your child no later than 3:45 pm. Follow staff instructions upon arrival.



## HARBOR HAVEN BUS TRANSPORTATION



Morning Pick-Up times can range from about 7:50 am to 8:30 am based on the distance of the route. Parents are notified of the approximate pick-up time in advance. Your HH transportation team will stop by your house when they practice the route and leave a note on your door if you are not home.

Afternoon Drop-Off - buses leave between 3:15 pm to 3:30 pm based on the distance of the route. Parents are notified of the approximate drop-off time in advance.

## BEFORE CARE & AFTER CARE

Arrangements can be made in advance for early drop-off and/or late pick-up. Before Care is available starting at 7:45 am. After Care is available until 5:45 pm. Call 908-964-5411 or email [kim@harborhaven.com](mailto:kim@harborhaven.com) for details.



## LOST & FOUND



Please do not send valuable items to camp. We are not responsible for the loss of personal items. We strongly recommend that each and every item, including clothing, be clearly marked with your child's name.

# USEFUL INFORMATION

## QUESTIONS

General questions can be addressed by phone at 908-964-5411 or by emailing [info@harborhaven.com](mailto:info@harborhaven.com), [kim@harborhaven.com](mailto:kim@harborhaven.com) or [ryan@harborhaven.com](mailto:ryan@harborhaven.com). Specific questions about your child's experience will be routed to his/her supervisor and/or a director.



## MEDICAL

Harbor Haven must receive an accurately completed [Health Form](#) before your child begins camp. When a child receives daily medication at camp a properly completed [Daily Medication Administration](#) form must be submitted. Medications must be brought directly to Harbor Haven in their original containers by parent or other adult designated by the parent. **DO NOT PUT ANY MEDICATION IN YOUR CHILDS BAG!**

## BIRTHDAYS

We are delighted to celebrate your child's summer birthday at camp! Please complete the birthday form and we will take care of the arrangements for a special treat (cupcakes or cake depending on allergies in group)! [Click here](#) for birthday form.



## RAINY DAYS & HOT DAYS



ALWAYS SEND YOUR CHILD'S BAG WITH A BATHING SUIT AND TOWEL even if it is raining or rain is predicted. The weather can change very quickly. On an inclement day, activities will take place inside.

When temperatures and/or air quality are deemed unhealthy, most activities will take place inside our air-conditioned building.

# TRIP INFORMATION

CAMPERS ARE REQUIRED TO WEAR COMPLIMENTARY HARBOR HAVEN T-SHIRT ON TRIP DAYS.

PLEASE NOTE: THE SPECIAL EVENT/TRIP CALENDAR IS AVAILABLE AT [HARBORHAVEN.COM](http://HARBORHAVEN.COM) IN APRIL

## TWEENS, TEENS & LIFE PROGRAM

Campers in Tweens (ages 12 & 13), Teens (ages 14 & 15) and LIFE Program (ages 16 & 18) go on one trip per week. No money is needed. Specifics are sent to you prior to each trip. Tweens and Teens eat lunch at camp as usual, unless otherwise specified. LIFE Program participants eat lunch out on trip days.

12-18  
YEAR  
OLDS

10-11  
YEAR  
OLDS

## SENIORS

Campers in Seniors (ages 10 & 11) go on five trips during the seven week camp period. Specifics are sent to you prior to each trip. No money is needed. Seniors eat lunch at camp as usual unless otherwise specified.

## INTERMEDIATES

Campers in Intermediates (ages 8 & 9) go on three trips during the seven week camp period. Specifics are sent to you prior to each trip. Intermediates eat lunch at camp as usual unless otherwise specified.

8-9  
YEAR  
OLDS

3-7  
YEAR  
OLDS

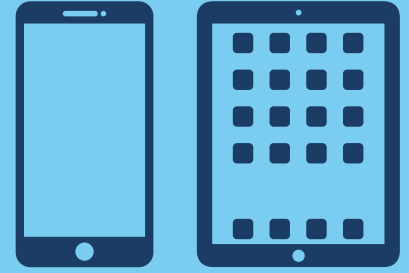
## JUNIORS & BRIGHT BEGINNINGS

Campers in Juniors (ages 6 & 7) and Bright Beginnings (ages 3 & 5) go on a trip once during the summer. Specifics are sent to you prior to the trip. Children eat lunch at camp as usual unless otherwise specified.

# USEFUL INFORMATION

## PERSONAL ELECTRONICS USE

Campers on Harbor Haven buses may use personal electronics on the rides to and from camp. Upon arrival, electronic devices will be held in a secure bus bag for each oute and returned on the way home. Clearly mark your child's name on every piece of equipment and provide and bag for storage.



## POLICIES



1. Sexual behavior and public displays of romantic affection are not permitted at camp or on camp sponsored trips.
2. Sexual harassment is not tolerated at Harbor Haven or on camp sponsored trips. Federal and state laws make sexual harassment illegal.
3. Any photo bearing any type of association to Harbor Haven may not be posted on any internet or social media site.
4. No photographing or videotaping of the Harbor Haven environment, buses, campers or staff is allowed without permission of the parent or director.
5. Smoking, vaping, e-cigarettes or tobacco/nicotine, alcohol, illegal drug/marijuana products of any kind are not permitted anywhere on the camp property, on camp sponsored trips, in vehicles or in the presence of children
6. Discriminatory behavior of any kind will not be tolerated.

