

# TRAVELQUEST USEFUL INFORMATION

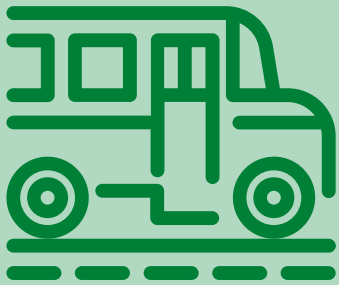
## PARENT TRANSPORTATION

Morning Drop-Off begins at 8:45 am. Please drop off your child no later than 9:10 am. Follow staff instructions upon arrival.

Afternoon Pick-Up begins when all camp buses have exited, typically at 3:35 pm. Please pick up your child no later than 3:45 pm. Follow staff instructions upon arrival.



## HARBOR HAVEN BUS TRANSPORTATION



Morning Pick-Up times can range from about 7:50 am to 8:30 am based on the distance of the route. Parents are notified of the approximate pick-up time in advance. Your HH transportation team will stop by your house when they practice the route and leave a note on your door if you are not home.

Afternoon Drop-Off - buses leave between 3:15 pm to 3:30 pm based on the distance of the route. Parents are notified of the approximate drop-off time in advance.

## BEFORE CARE & AFTER CARE

Arrangements can be made in advance for early drop-off and/or late pick-up. Before Care is available starting at 7:45 am. After Care is available until 5:45 pm. Call 908-964-5411 or email [kim@harborhaven.com](mailto:kim@harborhaven.com) for details.

**Before Care & After Care is not available in 2021.**



## LOST & FOUND

Please do not send valuable items to camp. We are not responsible for the loss of personal items. We strongly recommend that each and every item, including clothing, be clearly marked with your child's name.



# TRAVELQUEST USEFUL INFORMATION

## QUESTIONS

General questions can be addressed by phone at 908-964-5411 or by emailing [info@harborhaven.com](mailto:info@harborhaven.com), [kim@harborhaven.com](mailto:kim@harborhaven.com) or [ryan@harborhaven.com](mailto:ryan@harborhaven.com). Specific questions about your child's experience will be routed to his/her supervisor and/or a director.



## MEDICAL

Harbor Haven must receive an accurately completed Health Form before your child begins camp. When a child receives daily medication at camp a properly completed Daily Medication Administration form must be submitted. Medications must be brought directly to Harbor Haven in their original containers by parent or another adult designated by the parent. **DO NOT PUT ANY MEDICATION IN YOUR CHILDS BAG!**

## BIRTHDAYS

We are delighted to celebrate your child's summer birthday at camp! Please complete the birthday form and we will take care of the arrangements for a special treat (cupcakes or cake depending on allergies in group)! [Click here](#) for birthday form.



## TRIPS\*

TravelQuest campers are required to wear a complimentary Harbor Haven t-shirt on trip days - each camper receives 3 t-shirts. All costs are included in the tuition for the program including lunch out daily - **NO MONEY IS NEEDED FOR THE TRIPS!** Specifics about each trip are provided in advance.

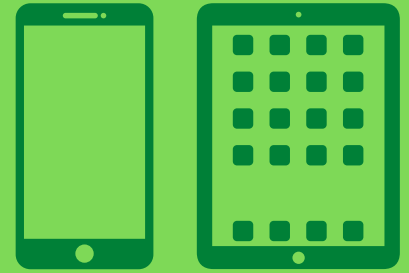
Please note: the TravelQuest trip calendar is available at [www.harborhaven.com](http://www.harborhaven.com).



# TRAVELQUEST USEFUL INFORMATION

## PERSONAL ELECTRONICS USE

Campers on Harbor Haven buses may use personal electronics on the rides to and from camp. Upon arrival, electronic devices will be held in a secure bus bag for each route and returned on the way home. Clearly mark your child's name on every piece of equipment and provide a bag for storage.



## POLICIES



1. Sexual behavior and public displays of romantic affection are not permitted at camp or on camp sponsored trips.
2. Sexual harassment is not tolerated at Harbor Haven or on camp sponsored trips. Federal and state laws make sexual harassment illegal.
3. Any photo bearing any type of association to Harbor Haven may not be posted on any internet or social media site.
4. No photographing or videotaping of the Harbor Haven environment, buses, campers or staff is allowed without permission of the parents and director.
5. Smoking, vaping, e-cigarettes or tobacco/nicotine, alcohol, illegal drug/marijuana products of any kind are not permitted anywhere on the camp property, on camp sponsored trips, in vehicles or in the presence of children
6. Discriminatory behavior of any kind will not be tolerated.

**\* ALL TRIPS AND ENTERTAINMENT ARE SUBJECT TO CANCELLATION BASED ON CDC AND/OR NJ HEALTH DEPARTMENT GUIDELINES, COMMUNITY HEALTH DATA AND OTHER HEALTH AND SAFETY FACTORS. IN THE EVENT THAT TRIPS ARE CANCELED, AN ALTERNATIVE TEENQUEST WILL BE PROVIDED AT CAMP.**

