

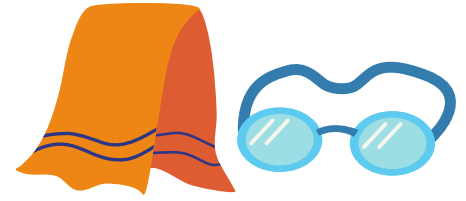
What to bring to camp!



1 BATHING SUIT. SEND EVERY DAY REGARDLESS OF THE WEATHER. IF YOUR CHILD SWIMS BEFORE LUNCH PLEASE HAVE THEM WEAR THEIR BATHING SUIT TO CAMP.



1 PAIR OF POOL SHOES, FLIP FLOPS, CROCS OR WATER SHOES. CLOSE TOE SHOES MUST BE WORN AT ALL OTHER TIMES.



1 TOWEL. GOGGLES ARE OPTIONAL BUT CAMPER MUST BRING THEIR OWN - PLASTIC ONLY. NO TEMPERED GLASS.



1 SPRAY BOTTLE OF SUNSCREEN TO KEEP IN BACKPACK FOR DAILY USE. APPLY IN THE MORNING BEFORE CAMP - WILL BE REAPPLIED AS NEEDED.



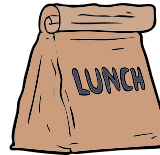
1 RAINCOAT/WINDBREAKER. OPTIONAL FOR INCLEMENT WEATHER.



1 SWEATSHIRT OR LIGHT JACKET. PLACE IN PLASTIC BAG TO PROTECT FROM WET ITEMS.



1 LARGE ZIPLOC BAG LABELED AND FILLED WITH ONE FULL CHANGE OF CLOTHES (REQUIRED FOR CAMPERS AGED 3-9). THIS WILL STAY AT CAMP!



LUNCH EVERY DAY. IF YOUR CAMPER IS ORDERING A SANDWICH, PLEASE FEEL FREE TO SEND SNACK ITEMS TO GO ALONG WITH THE ITEM.

EACH CAMPER WILL BE GIVEN A HARBOR HAVEN BACKPACK MARKED WITH THEIR NAME, ALONG WITH A HARBOR HAVEN T-SHIRT. PLEASE USE THIS BACKPACK FOR THE ENTIRE SUMMER. THE BACKPACK IS GIVEN ON THE FIRST DAY. SEND YOUR CHILD'S BELONGINGS IN A DISPOSABLE BAG AND WE WILL TRANSFER THEM INTO THE BACKPACK.

EQUIPMENT

EQUIPMENT NEEDED FOR THE DAILY PROGRAM IS PROVIDED EXCEPT FOR SWIM ATTIRE AND GOGGLES.

WHAT COMES HOME DAILY?

BACKPACK WITH ALL ITEMS FROM THE DAY. PLEASE SEND A DRY BATHING SUIT AND CLEAN TOWEL DAILY.

LABEL LABEL LABEL!!

DON'T FORGET TO LABEL ALL YOUR CHILD'S BELONGINGS